



## Industrial Freezer Sales

A division of IDS

5311 Derry Avenue Building D Agoura Hills CA 91301

Phone (818) 597-4300 Fax (818) 597-4301

[www.freezerlink.com](http://www.freezerlink.com)

### Chromatography Refrigeration

Advanced design incorporates the latest in cabinet, refrigeration, temperature control and monitoring features. Industrial quality chromatography laboratory refrigerators give reliable temperature control for chromatography system operation. One, two, and three-door models offer easy set-up and convenient access to all instrumentation.

Heavy duty industrial quality laboratory refrigerators guarantee reliable temperature control for chromatography system operation. One, two, and three-door models offer easy set-up and convenient access to all instrumentation.



#### Standard Product Features:

- Adjustable control range from 20C to 100C.  
**Factory preset to 4C.**
- Digital LED microprocessor control with warm and cold audible and visual alarms with remote alarm contacts.
- **Exterior front, sides and back are painted white.**
- Exterior top and bottom are galvanized steel.
- **Interior is painted white.**
- The complete cabinet is foamed-in-place with high density polyurethane foam insulation, with a heavy duty door with pivot hinges and pull handles and fully magnetic door gaskets.
- 4 casters on one and two door models (2 locking), 6 casters (3 locking) on three door model.
- 3 half size cantilevered solid stainless steel shelves per unit.
- 3 epoxy coated wire shelves per additional door section on two and three door models.
- **Two access ports 2" sleeves with covers.**
- Full size, double pane glass doors with anti-condensate heater wires.
- Key door locks.
- **Interior light, switch activated.**
- Internal electrical outlet.
- Complete top mounted refrigeration system, maximizing the storage area.
- Forced air flow refrigerating optimizes airflow and temperature uniformity.
- Air-cooled condensing unit.
- **Automatic defrost.**
- Warranties: (USA and Canada) 18 months parts and labor. 5 years compressor. 18 months parts (International)
- **UL, CUL listed**

[www.freezerlink.com](http://www.freezerlink.com)



## Industrial Freezer Sales

A division of IDS

5311 Derry Avenue Building D Agoura Hills CA 91301

Phone (818) 597-4300 Fax (818) 597-4301

[www.freezerlink.com](http://www.freezerlink.com)

### Chromatography Refrigeration

#### Options for all units

- Extra shelf with clips
- Stainless steel drawer (8 maximum per door)
- Wire basket drawer (6 maximum per door)
- Solid door
- Legs in lieu of casters
- Stainless steel interior
- Stainless steel exterior
- Reverse door hinge
- Temperature chart recorder w/paper
- Export crating
- 4-20ma output
- Sensor access port 1" diameter

IDS Part #	Description
<b>CR1G24</b>	Chromatography Fridge 4° (1) GL Door 24 CU FT 115V, 60Hz
<b>CR1G24E</b>	Chromatography Fridge 4° (1) GL Door 24 CU FT 230V, 50Hz
<b>CR1G33</b>	Chromatography Fridge 4° (1) GL Door 33 CU FT 115V, 60Hz
<b>CR1G33E</b>	Chromatography Fridge 4° (1) GL Door 33 CU FT 230V, 50Hz
<b>CR2G52</b>	Chromatography Fridge 4° (2) GL Door 52 CU FT 115V, 60Hz
<b>CR2G52E</b>	Chromatography Fridge 4° (2) GL Door 52 CU FT 230V, 50Hz
<b>CR3G80</b>	Chromatography Fridge 4° (3) GL Door 80 CU FT 115V, 60Hz
<b>CR3G80E</b>	Chromatography Fridge 4° (3) GL Door 80 CU FT 230V, 50Hz





# Industrial Freezer Sales

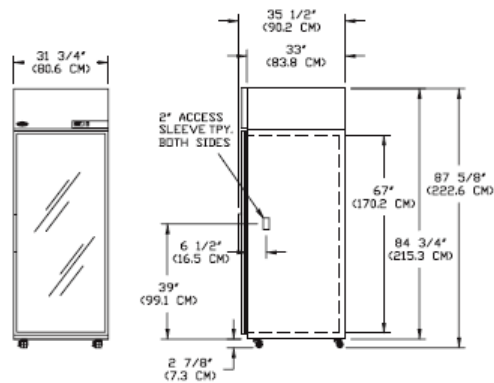
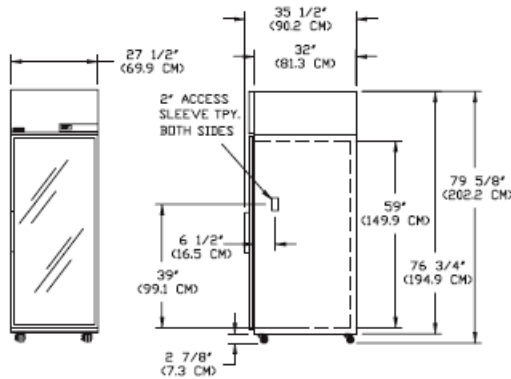
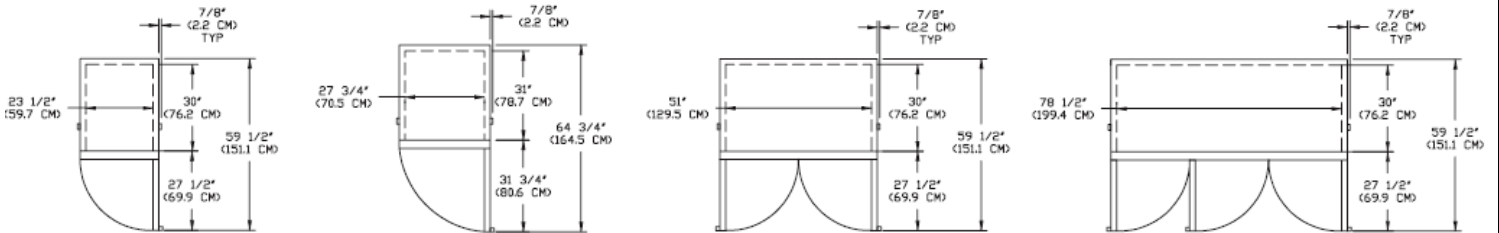
A division of IDS

5311 Derry Avenue Building D Agoura Hills CA 91301

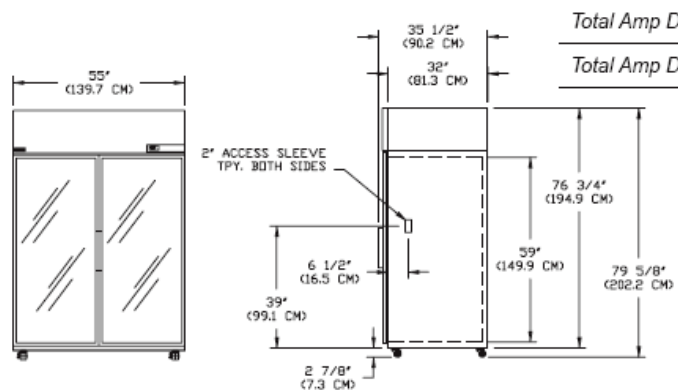
Phone (818) 597-4300 Fax (818) 597-4301

www.freezerlink.com

## Dimensions



	CR1G24	CR1G33	CR2G52	CR3G80
Crated Height (in) (cm)	83" (205)	91" (235)	83" (205)	83" (205)
Crated Width (in) (cm)	31" (78)	89.5" (36)	59" (149)	86-1/2" (218)
Crated Depth (in) (cm)	38-7/8" (96)	39-7/8" (99)	39-7/8" (247)	38-7/8" (96)
Crated Weight (lbs) (kg)	330 (165.5 kg)	396 (284 kg)	536 (247 kg)	750 (340.1 kg)
Interior Height (in) (cm)	59" (149)	67" (170)	59" (149)	59" (149)
Interior Width (in) (cm)	23-1/2" (59)	27-3/4" (70)	51" (129)	78-1/2" (199)
Interior Depth (in) (cm)	30" (76)	31" (78)	30" (76)	30" (76)
Overall Height (in) (cm)	79-5/8" (202)	87-5/8" (222)	79-5/8" (202)	79-5/8" (202)
Overall Width (in) (cm)	27-1/2" (69)	31-3/4" (80)	55" (139)	82-1/2" (209)
Overall Depth (in) (cm)	35-1/2" (90)	36-1/2" (92)	35-1/2" (90)	35-1/2" (90)
Gross Cubage (ft.3) (m3)	24.0 (0.6)	33 (0.9)	52.0 (1.4)	80.0 (2.2)
Epoxy Coated Shelves	Optional	Optional	3	6
Solid Stainless Steel Shelves halfsize	3	3	3	3
Casters	4 (2 Locking)	4 (2 Locking)	4 (2 Locking)	6 (3 Locking)
Condensing Unit Size	1/4 HP	1/3 HP	1/2 HP	3/4 HP
Refrigerant	R-134a	R-134a	R-134a	R-134a
Maximum Fuse Size AMPS	15	15	15	15
Total Amp Draw /0	8.6	8.6	10.7	10.4
Total Amp Draw /5	3.2	3.2	4.2	8.1



www.freezerlink.com